



ServersCheck

Quick Installation Guide – Zoom 4595 USB GSM modem

This document is intended to help you configure a Zoom 4595 USB GSM Modem for sending out SMS alerts.

The installation steps below are for a Windows XP installation. Installation process on other Windows platforms is similar.

1. Requirements

1.1 USB Port

You need to have at least one USB port available to connect the GSM modem to server running the software. The GSM modem should NOT be connected to an unpowered USB hub as power delivered to the GSM modem may be insufficient causing the GSM modem to stop responding.

1.2 SIM Card compatible with GSM's

A SIM card is required for the GSM modem to operate. The SIM card should be compatible with GSM's and should allow direct GSM network connection. If you use a prepaid card then ensure that the SIM card has been used a first time and that sufficient credits are available.

1.3 Deactivated PIN code on SIM Card

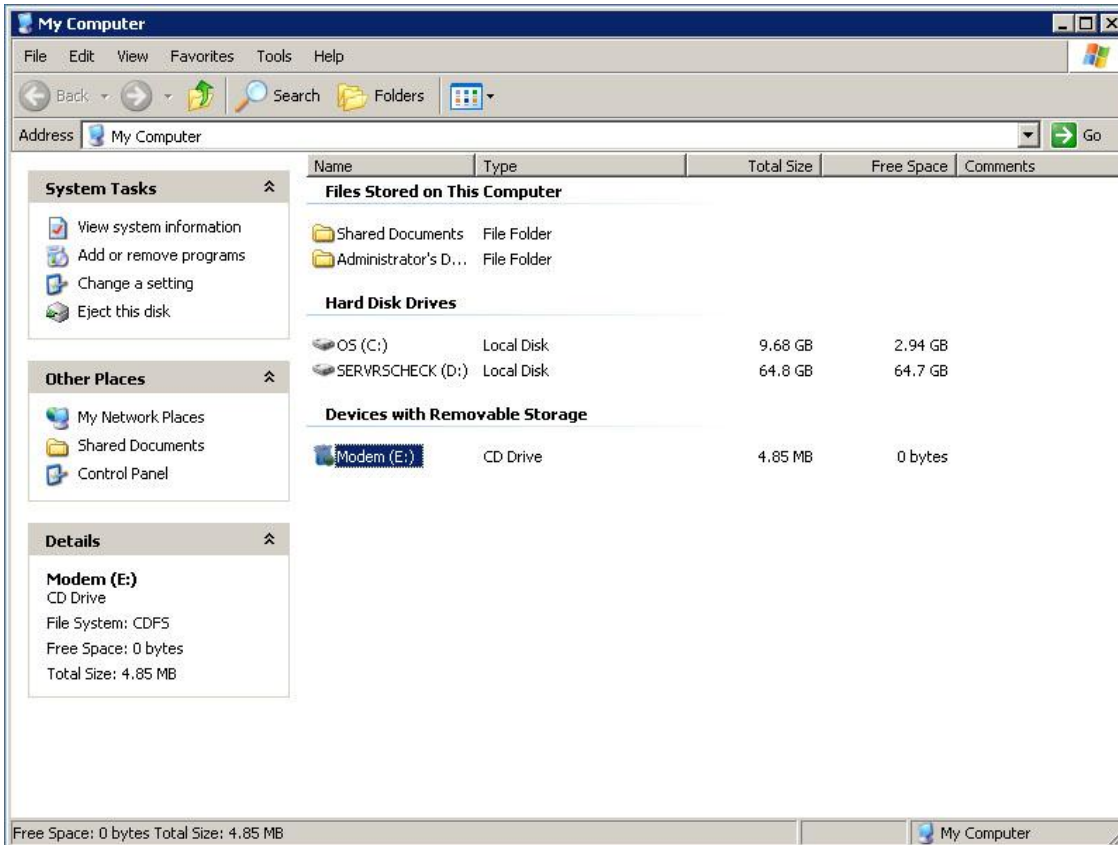
The PIN code on the SIM card should be deactivated as this improves performance of the GSM communication and allows for faster reconnects.

2. Installing the GSM modem

If above requirements are met, then you can now plug in the Zoom 4595 GSM modem into the server hosting the ServersCheck Monitoring Software.

The Installation process is very simple and can be accomplished in 7 steps. All software required is loaded onto the modem itself.

1. If the Autorun does not start, double click your My Computer icon, the modem will be seen as a new drive.



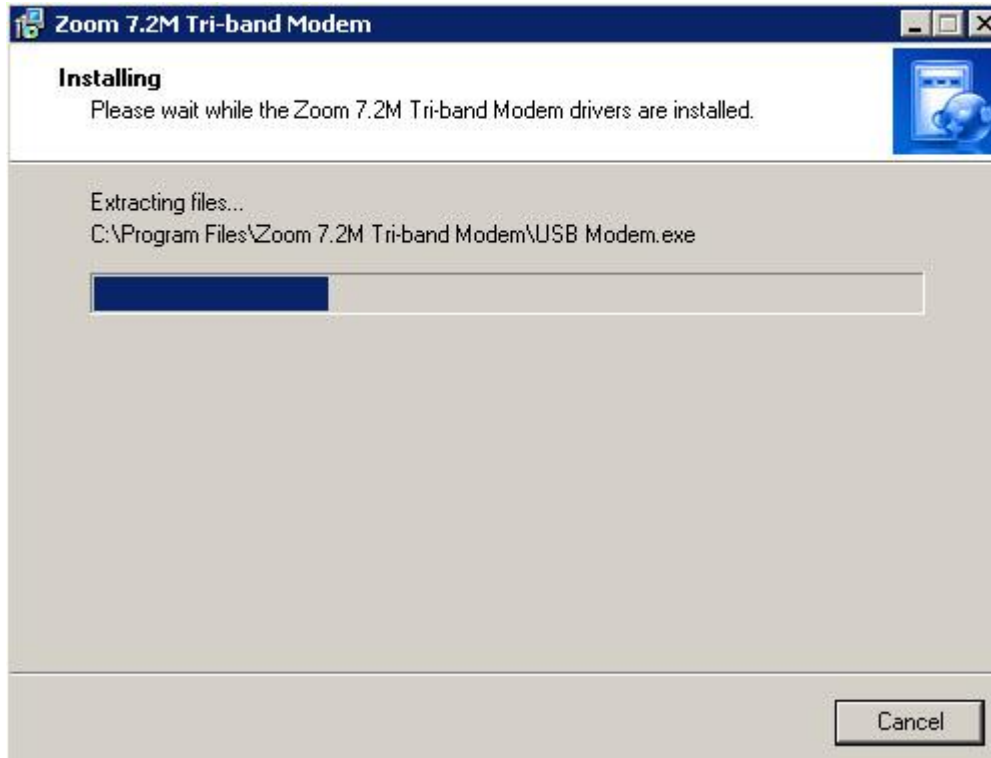
2. Select the Language you wish to install the software with.



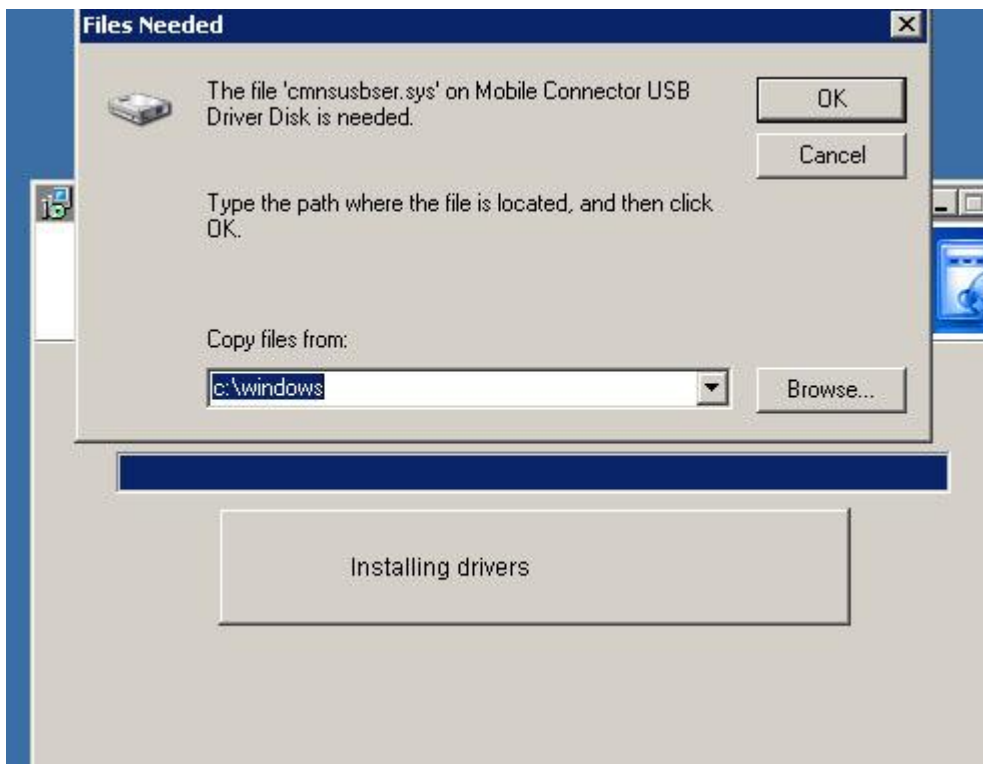
3. Click Next at the Welcome Screen.



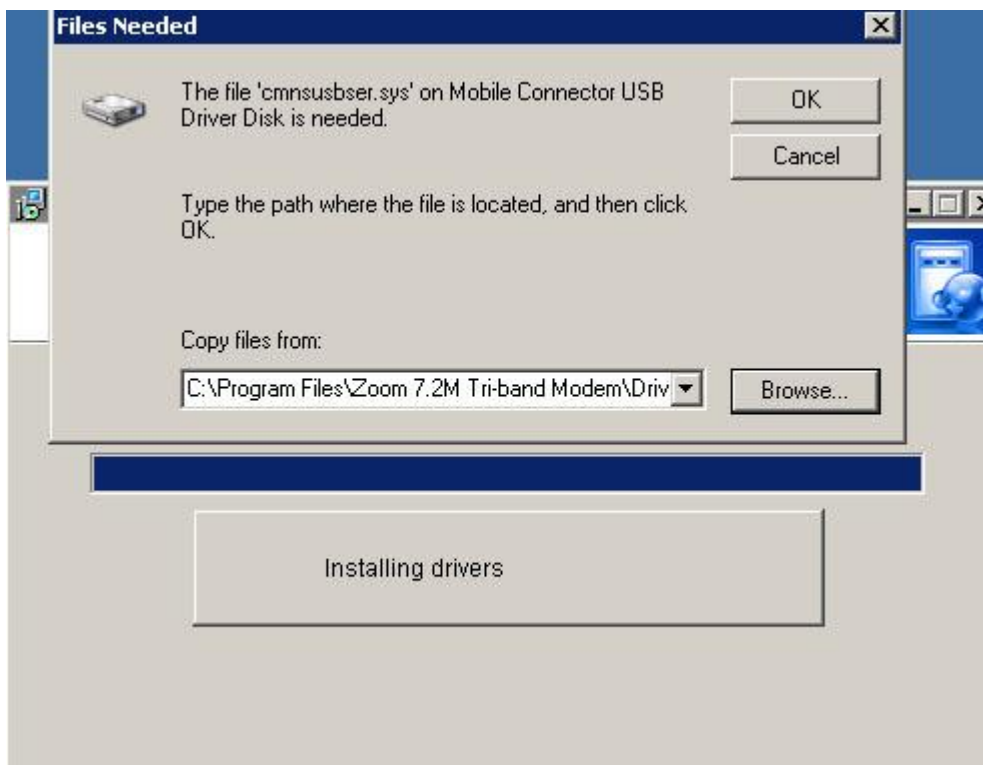
4. The software will install to the default location after clicking next.



5. The software installation will stop and prompt for a file location.



6. The driver is located within the installation directory and can be located by clicking on the browse button.



7. Installation is complete!



3. Configuration of the Zoom 4595 Modem

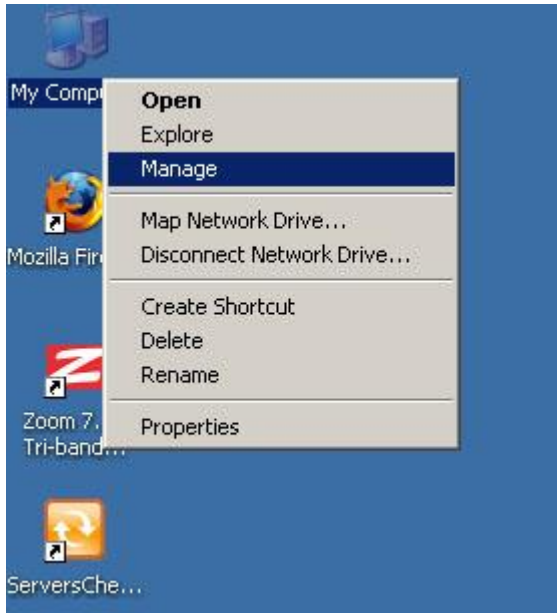
Configuration of the Zoom 4595 Modem to work with ServersCheck is simple.

Requirements:

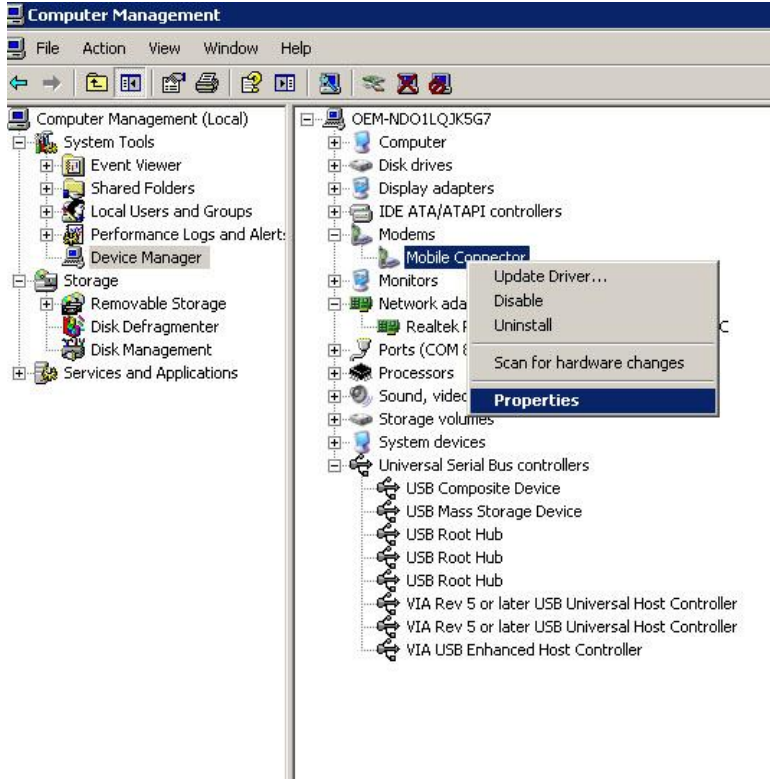
1. **PIN code request MUST be disabled.**

Configuration Steps:

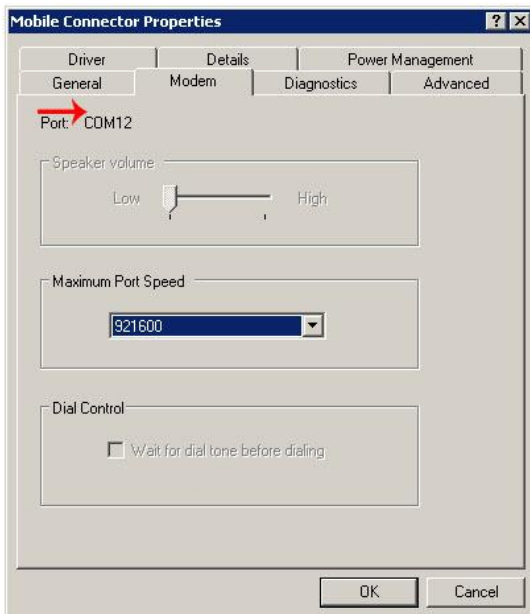
1. Right click the My Computer Icon and select Manage.



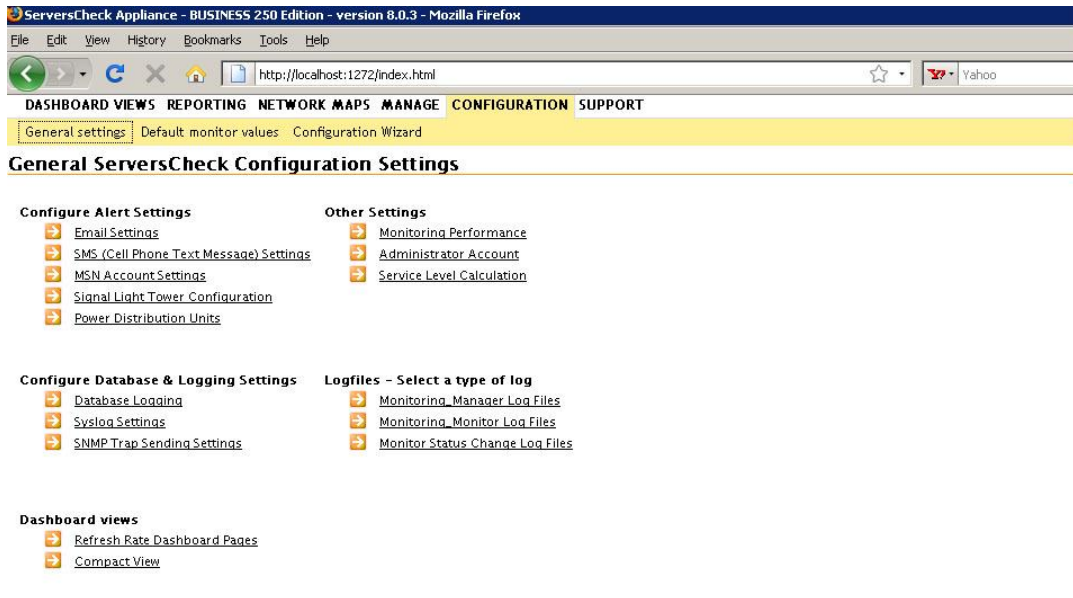
2. In the Device Manager, navigate to Modems. Right click on Mobile Connector and Select Properties.



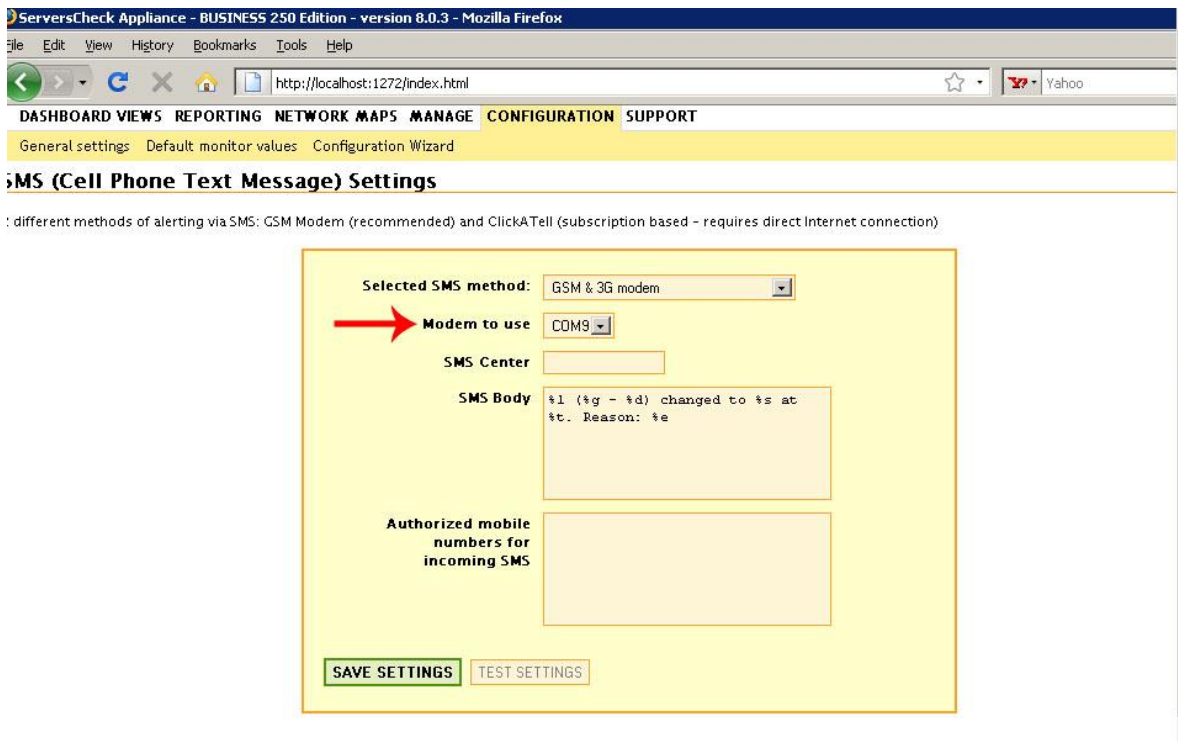
3. On the Modem Tab, note the COM port. This will be necessary to configure the ServersCheck SMS sending engine.



4. Navigate to ServersCheck and Select Configuration, General Settings. Under General Settings, select SMS.



5. Ensure the Selected SMS Method says GSM & 3G modem. Under the modem to use, select the COM port noted from step 3.



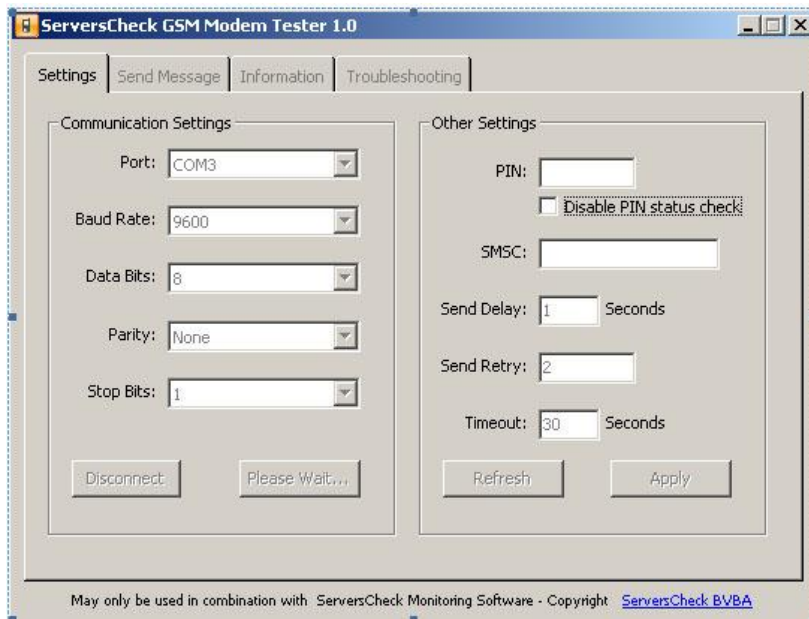
6. Save Settings.



4. Testing the GSM Modem

To test the settings:

1. Launch the GSM Modem Tester from the ServersCheck directory.
2. Change the Port to the same from Step 3 above and press Connect.



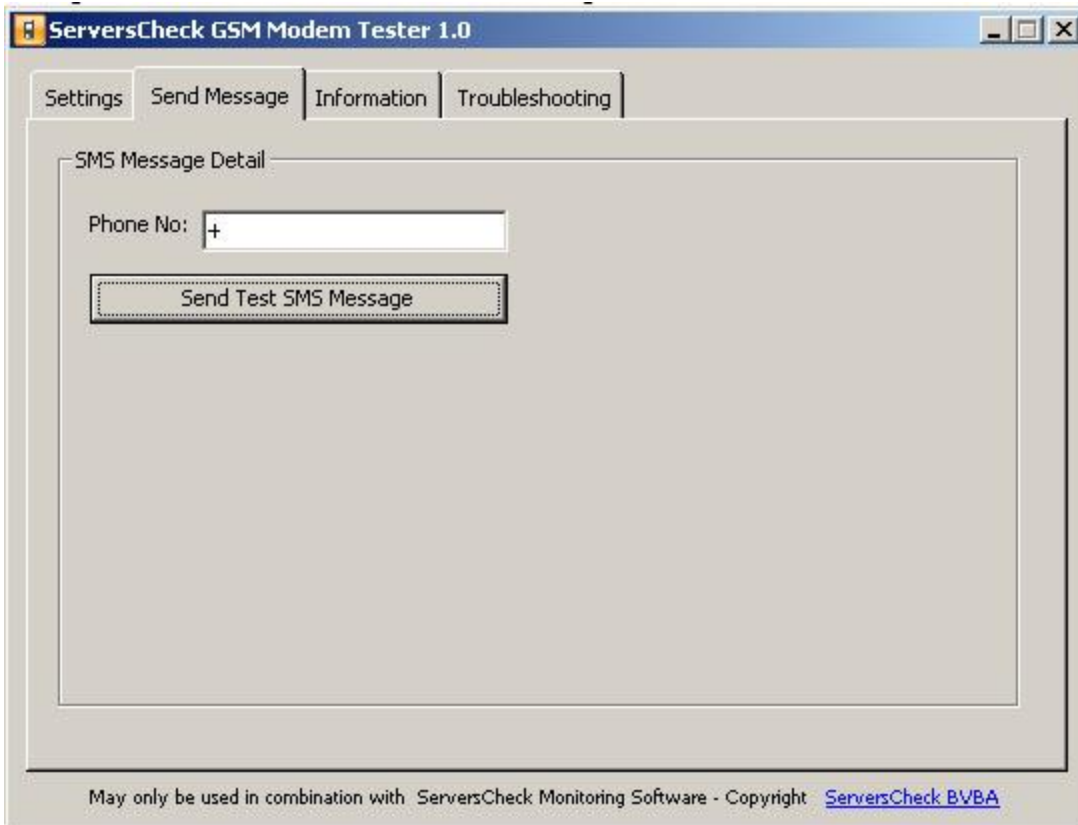
3. If everything is configured properly, you will get the following screen:



(Common Errors: Invalid Response to the PDU - indicates that the SIM card is not active or not working as per requirements. Initialize your SIM card or use a different one.)



4. Click on the Send Message tab. Enter your phone number to your cellular phone and the software will generate a test message to your phone.



5. If everything is configured properly, you will get the following screen:

