

**SERVERSCHECK**

[www.serverscheck.com](http://www.serverscheck.com)

**Quick Installation Guide  
For Sensors with Solarwinds  
Network Performance Monitor  
Software**

**Copyright:**

Copyright © 2016 ServersCheck BVBA

All rights reserved.

Reproduction without permission is prohibited.

**Software:**

The software described in this manual is furnished under a license agreement and may be used only in accordance with the terms of that agreement.

**Trademarks:**

ServersCheck is a trademark of ServersCheck.

All other trademarks or registered marks in this manual belong to their respective manufacturers.

**Disclaimer:**

Information in this document is subject to change without notice and does not represent a commitment on the part of ServersCheck.

ServersCheck provides this document "as is," without warranty of any kind, either expressed or implied, including, but not limited to, its particular purpose. ServersCheck reserves the right to make improvements and/or changes to this manual, or to the products and/or the programs described in this manual, at any time.

ServersCheck has made this document to the best of its abilities. However ServersCheck assumes no responsibility for its use, or for any infringements on the rights of third parties that may result from its use.

## Document Overview

This document outlines the integration with the ServersCheck PoE & SNMP sensors with the Solarwinds NPM monitoring software. This document assumes that a sensor was configured on the network as per user manual instructions.

The manual can be downloaded from [www.serverscheck.com/sensors/manual.asp](http://www.serverscheck.com/sensors/manual.asp). This document also assumes that Solarwinds has been installed on a system and the user is knowledgeable with the SNMP technology. For more information on Solarwinds, please visit <http://www.solarwinds.com/network-performance-monitor>

For this guide our gateway's SNMP settings is as shown below

## SNMP Settings

### SNMP Agent

Enable SNMP Agent

Port:

Version:

### SNMP v2 Community

Read Community:

Write Community:

### SNMP v3 USM

Username:

Auth Key:

Protocol:

Privacy Key:

Protocol:

### SNMP Tran

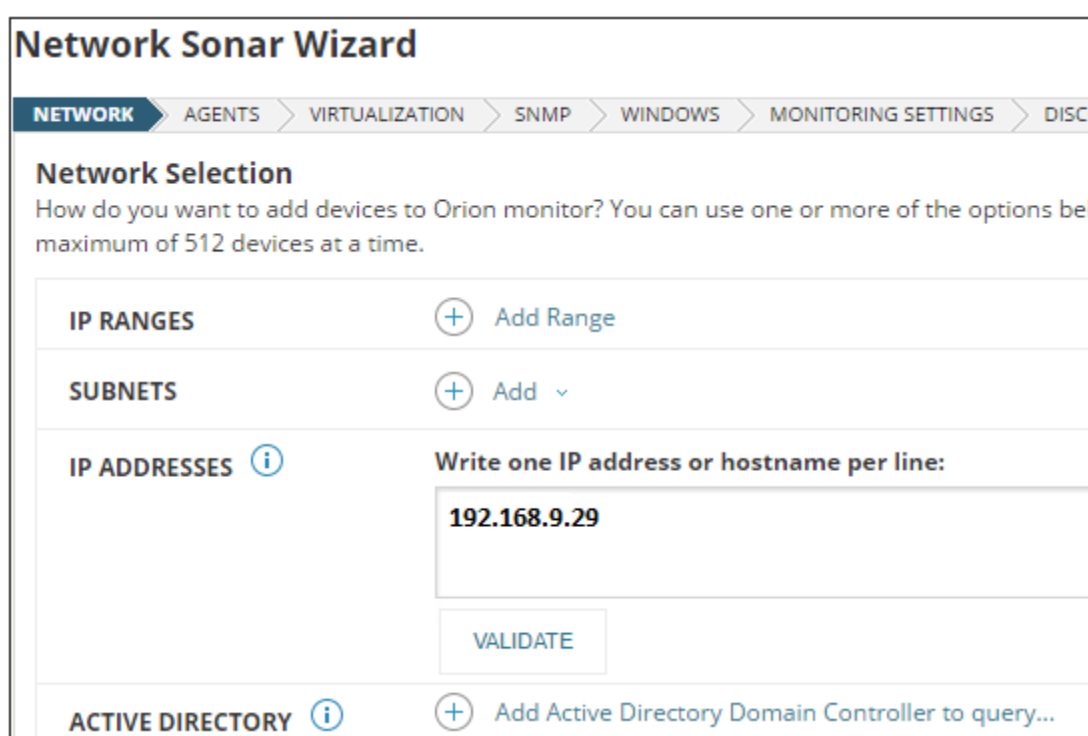
Guide on how to add a ServersCheck device to a Solarwinds NPM Software.

## Adding the SensorGateway

1. Open the Solarwinds NPM software. If the Discovery Wizard does not start automatically after configuration, click Settings - Network Discovery.

Click Add New Discovery, and then click Start.

or on the Network Panel, add the IP address you want to search



The screenshot shows the 'Network Sonar Wizard' interface. At the top, there is a navigation bar with tabs: NETWORK (selected), AGENTS, VIRTUALIZATION, SNMP, WINDOWS, MONITORING SETTINGS, and DISCOVERY. Below the navigation bar, the main heading is 'Network Selection'. Underneath, a sub-heading asks 'How do you want to add devices to Orion monitor? You can use one or more of the options below. Maximum of 512 devices at a time.' There are four main sections for adding devices: 1. 'IP RANGES' with a plus icon and 'Add Range' text. 2. 'SUBNETS' with a plus icon and 'Add' text followed by a dropdown arrow. 3. 'IP ADDRESSES' with an information icon. To its right, there is a text input field with the instruction 'Write one IP address or hostname per line:' and the IP address '192.168.9.29' entered. Below this field is a 'VALIDATE' button. 4. 'ACTIVE DIRECTORY' with an information icon, a plus icon, and the text 'Add Active Directory Domain Controller to query...'.

2. On the SNMP Panel:

Put in the SNMP credentials, it could be SNMP v1, SNMP v2c or SNMP V3.  
If you uses the community string other that public or private, click Add Credentials and provide the required information.

**Add New Credential**

**SNMP Version:**  
SNMP v3 ▼

**SNMP v3 Credential**  
Choose Credential:  
<New credential> ▼

User Name:

Context:

Authentication Method: None ▼ Password / Key:  x

Privacy / Encryption Method: None ▼ Password / Key:  x

**ADD** **CANCEL**

3. Go to Discovery Scheduling, provide the frequency and run the discovery immediately for you to search for the device.

**Network Sonar Wizard**

NETWORK > AGENTS > VIRTUALIZATION > SNMP > WINDOWS > MONITORING SETTINGS > DISCOVERY SETTINGS > **DISCOVERY SCHEDULING**

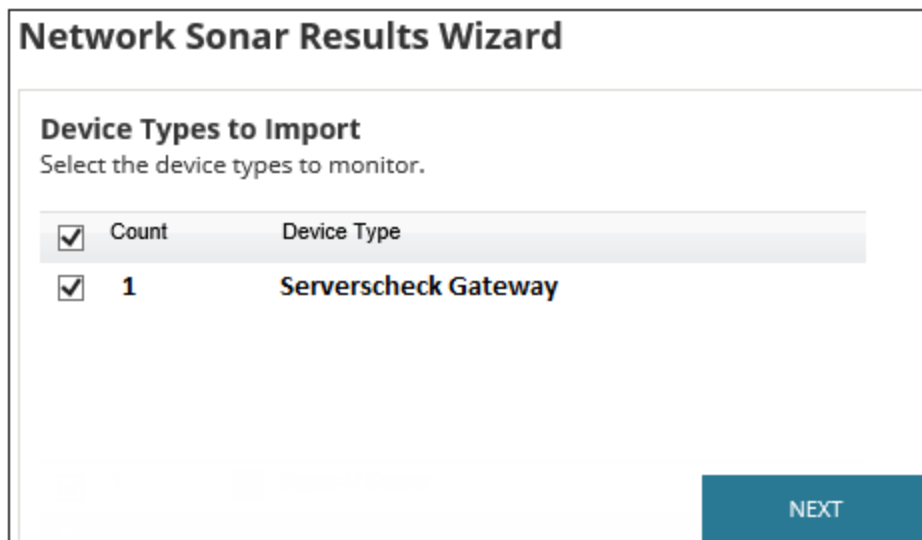
**Discovery Scheduling**  
Configure a schedule for your discovery.

Frequency: Once ▼

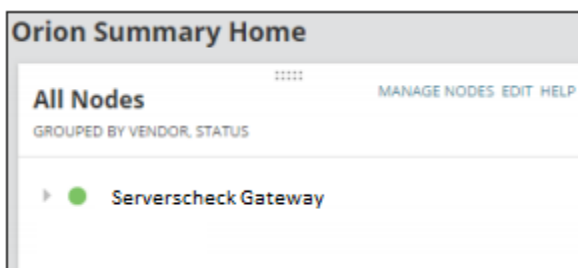
Execute immediately:  Yes, run this discovery now  
 No, don't run now

**BACK** **DISCOVER**

4. Once finished discovering, you could now select the Device Types to Import



5. When the import completes, click Finish
6. Click the My Dashboards - summary to explore the device



### Updating the MIB file on the Solarwinds Database

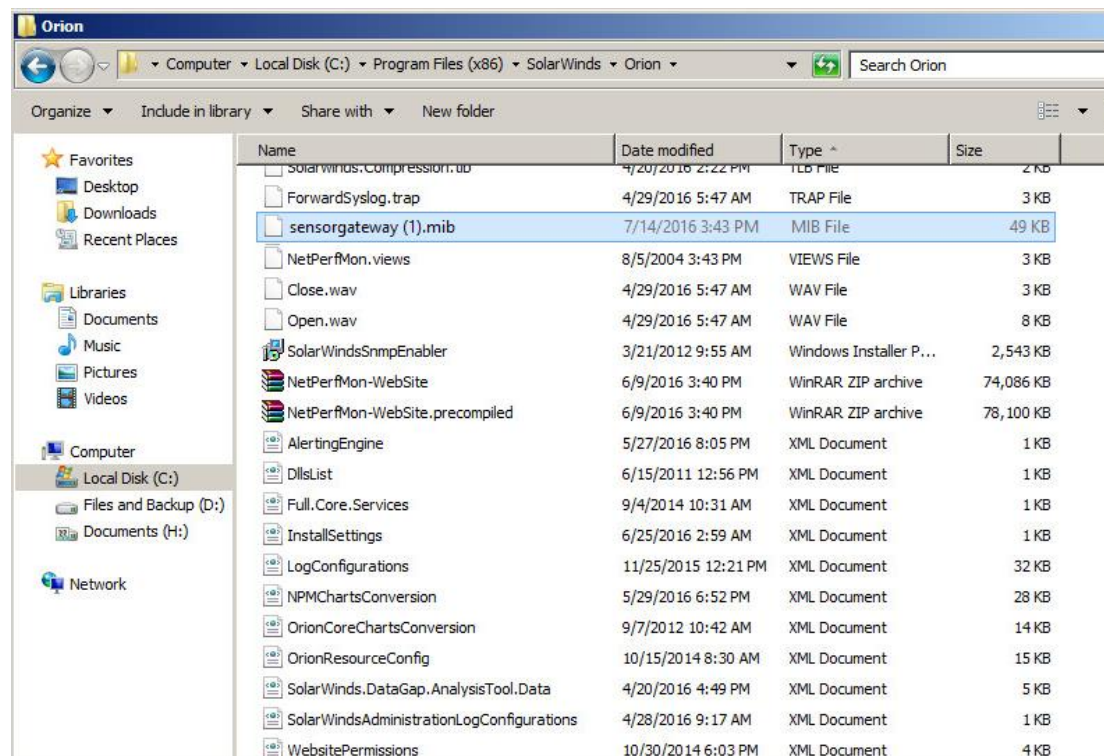
Solarwinds has already preloaded MIB files in its database. But to load the MIB file specific to the Serverscheck Sensorgateway, you may follow these instructions:

1. Download the MIB file from Serverscheck Website  
<https://serverscheck.com/support/downloads.asp>

2. Copy the sensorgateway.mib file and paste in the default location of the Solarwinds

For Windows Server 2008

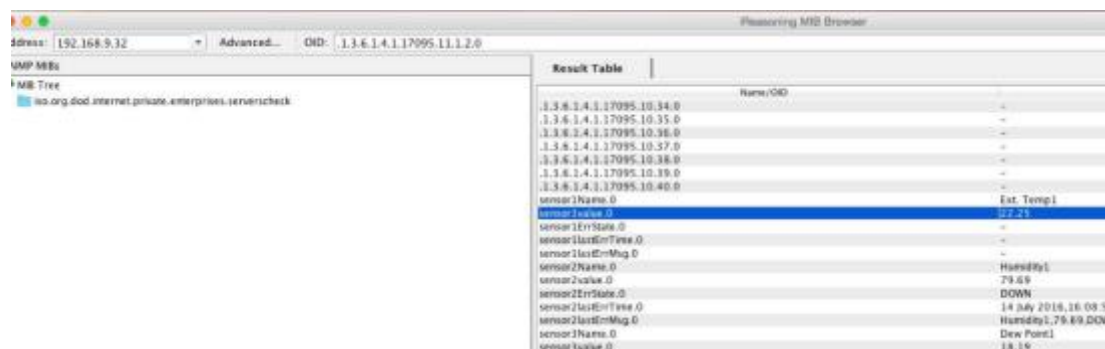
C:\Program Files (x86)\SolarWinds\Orion

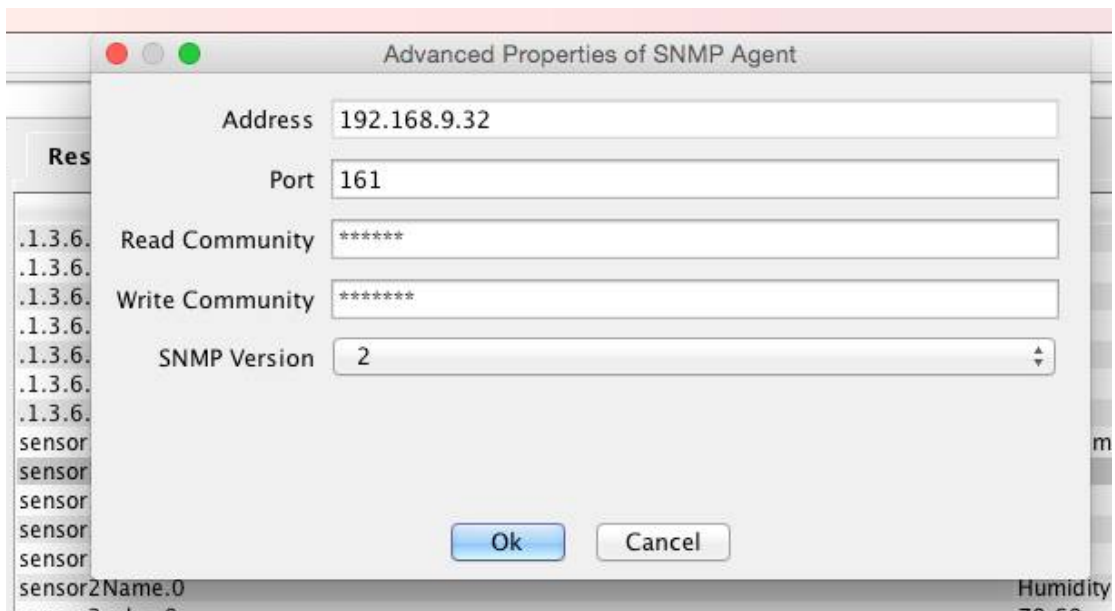


## Adding Nodes/OIDs for Monitoring

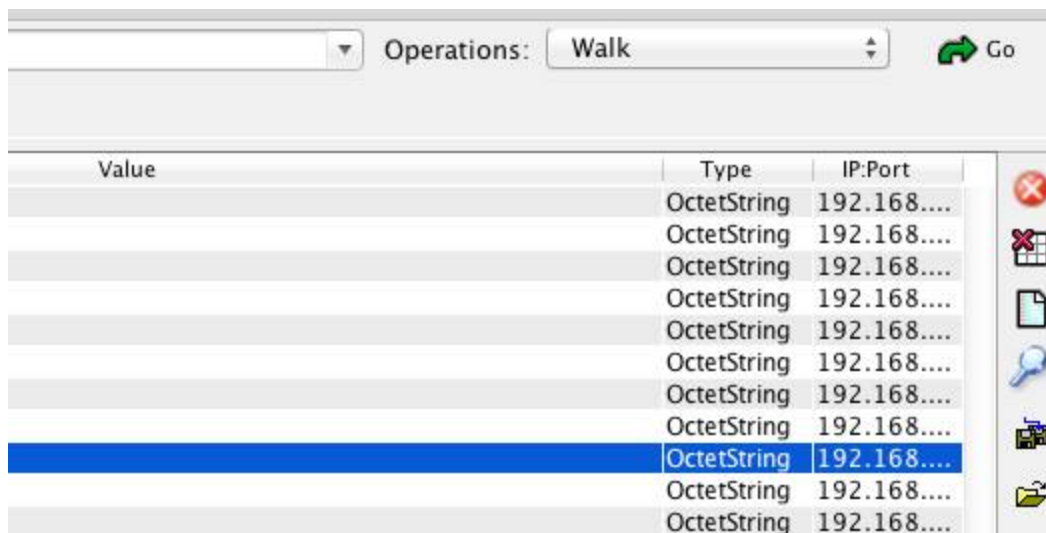
Example on how to get OID from iReasoning

1. Put the IP address and click Advanced. Then put in the SNMP credentials



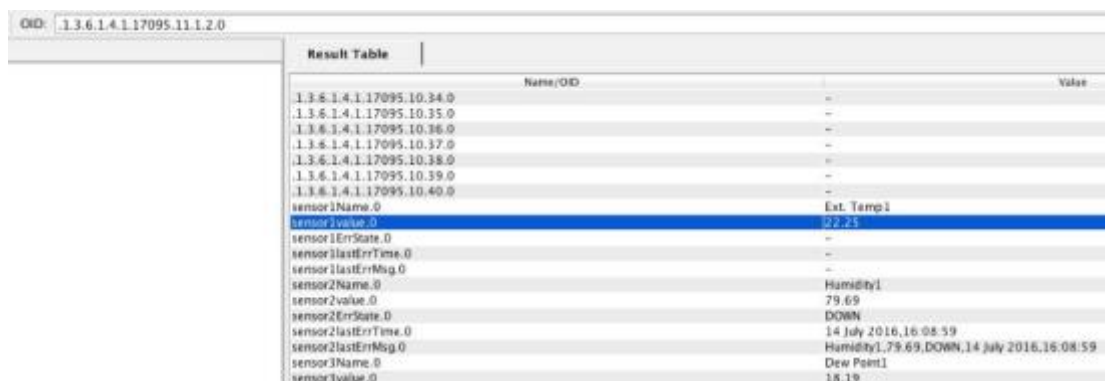


2. Select under Operations : Walk



This will scan the device for all SNMP OID's

3. In this example, we will be using the OID for the Internal Temp of the Gateway

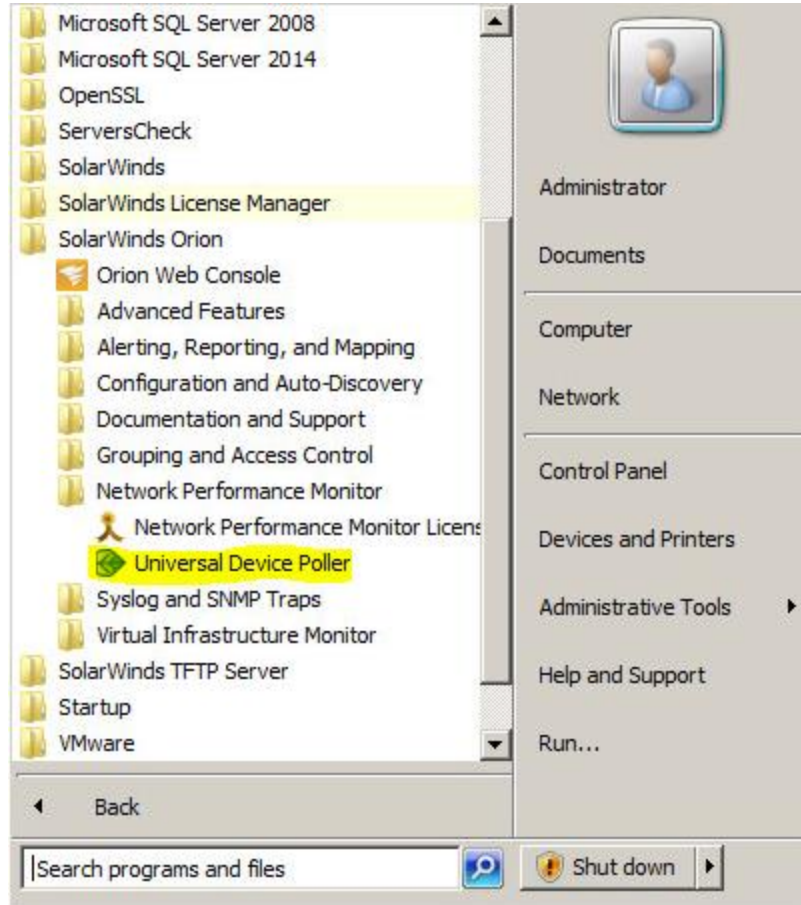




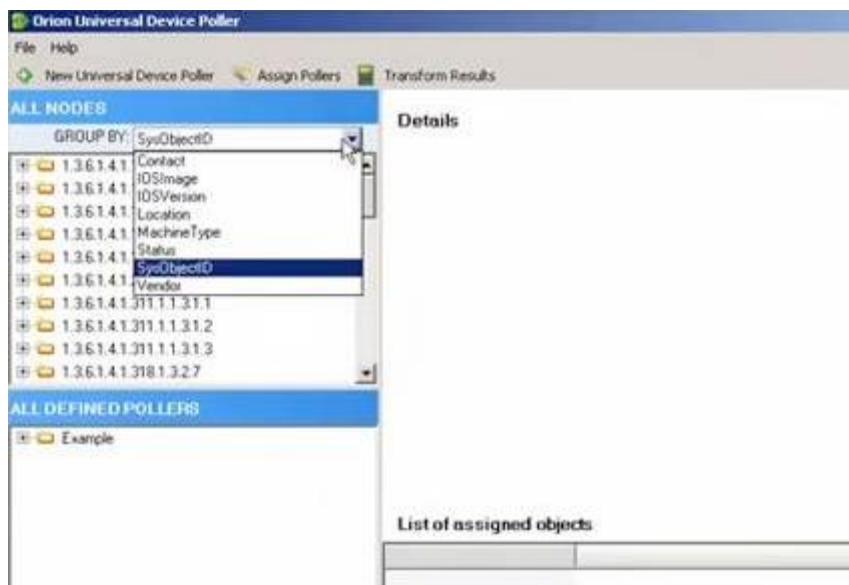
The SNMP OID .1.3.6.1.4.1.17095.11.1.2.0 is the value of the internal temperature reading of the Gateway.

## To Monitor this Node on Solarwinds

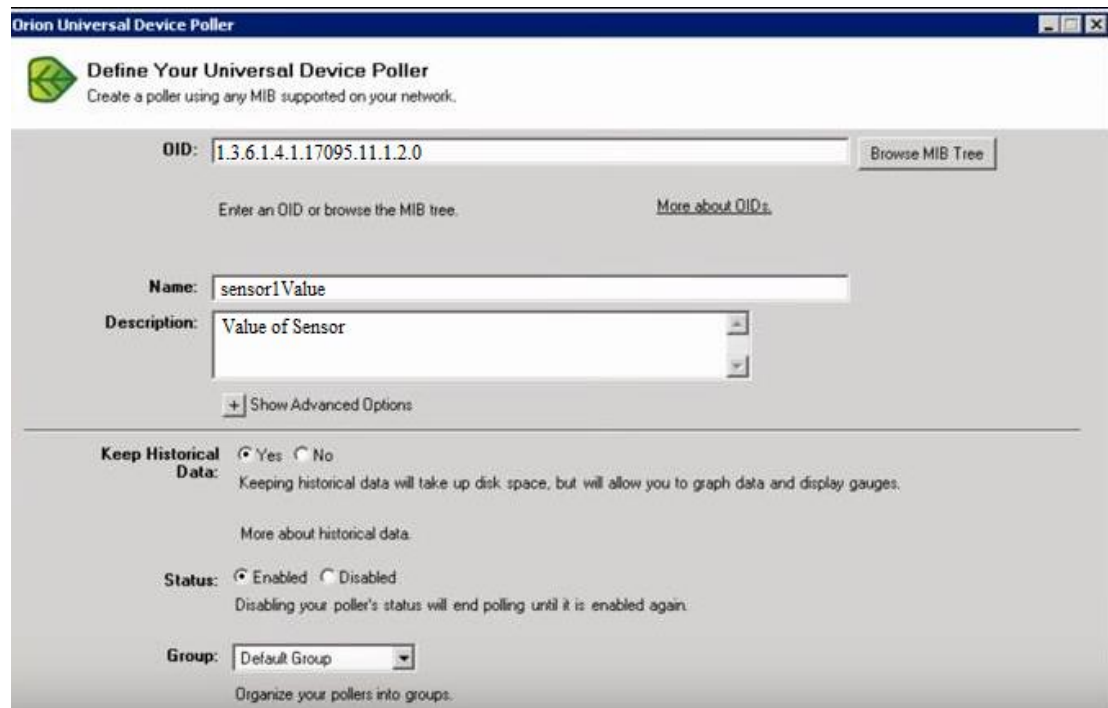
### 1. Open Solarwinds Universal Device Poller



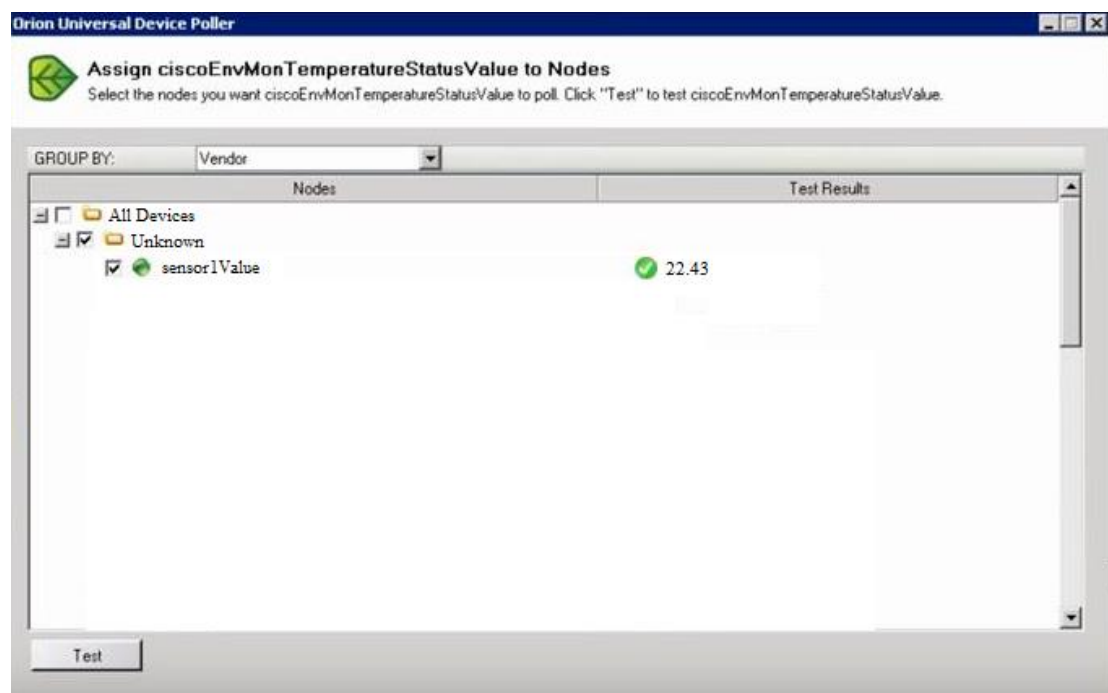
### 2. Select Sys Object ID as the group



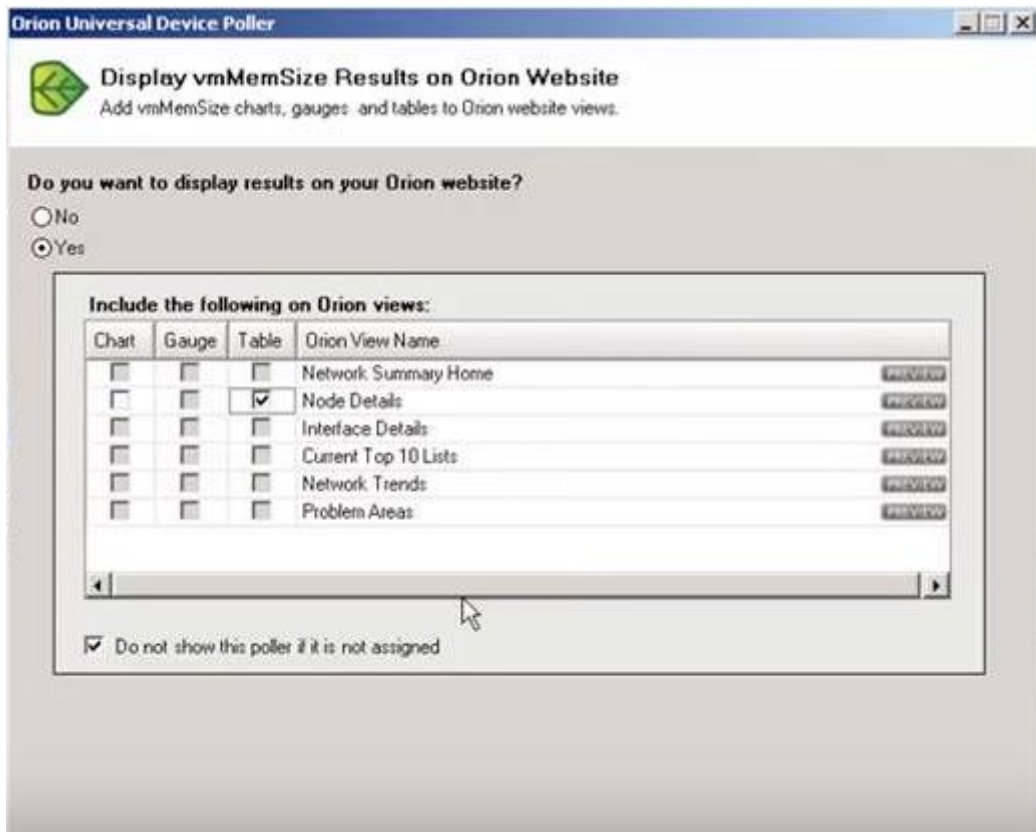
3. Add the OID of the internal temp of the sensorgateway



4. Click Next and Test the OID if it is supported and if it has a value

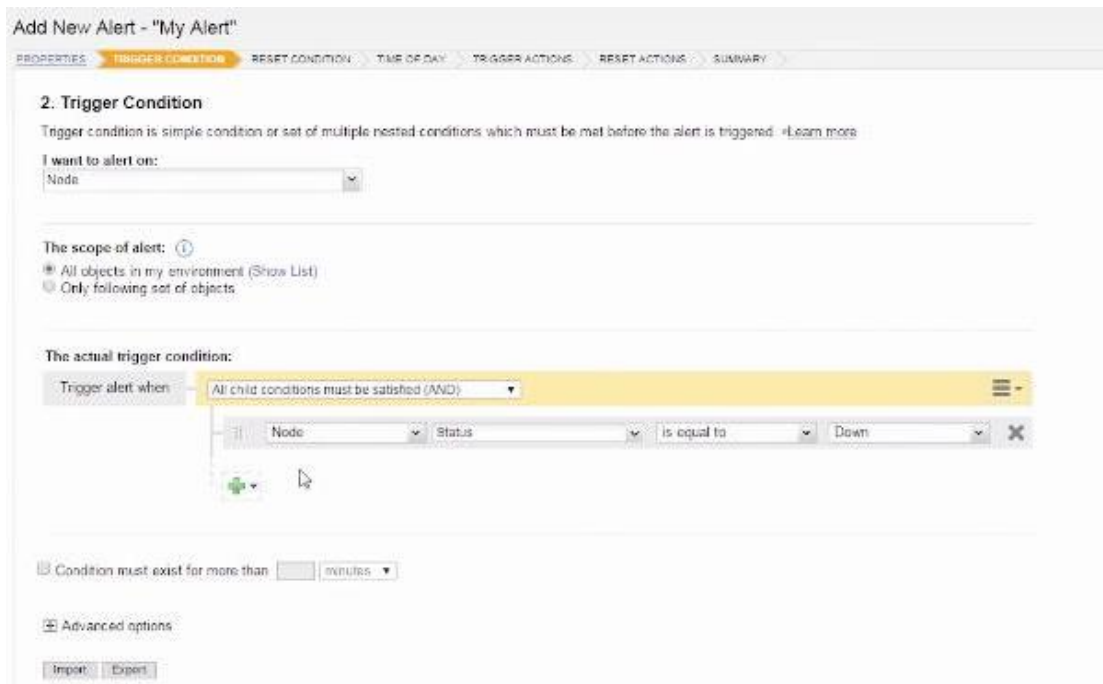


5. Click Next and put a check mark for Node Details to show up on the NPM software and click finish.



## To add Alerts

1. Select Alerts & Activity - Alerts and click Manage Alerts
2. Select the Node and customize the Alert depending on the condition you want.



3. Add an action to the Alert

Add Action

Select action you want to execute

Action	Description
Change Custom Property	Changes a Custom Property of Network Object when the Alert is Triggered or Reset
Dial Paging or SMS Service	Send a Page, SMS or Beeping message via NotePage
Email a Web Page	Send an Email message that contains a Web Page
Execute an External Program	Execute a program when the Alert is Triggered or Reset
Execute an External VB Script	Execute a VB Script file when the Alert is Triggered or Reset
Log the Alert to a File	Logs the Alert to a text file
Log the Alert to the NetPerfMon Event Log	Log the Alert in the Network Performance Monitor Event Log
Play a Sound	Play a Sound when an Alert is Triggered or Reset
Send Net Message	Send a Windows Net Message
Send SNMP Trap	Send SNMP Trap when the Alert is Triggered or Reset
Send a GET or POST Request to a Web Server	Interface with other applications via HTTP GET or POST
Send a Syslog Message	Send a Syslog Message when Alert is Triggered or Reset.
Send an Email/Page	Send an E-Mail message via an SMTP Server
Set Custom Status	Set a Custom Status for a Node Object (advanced)
Text to Speech Output	Speak a phrase using Text-to-Speech when an Alert is Triggered or Reset
Windows Event Log	Log an entry in the Windows Event log

CONFIGURE ACTION

CANCEL