



ServersCheck

Quick Installation Guide – LCD Display

This document is intended to help you configure a Crystalfontz LCD Display to operate with the ServersCheck Monitor Software.

The installation steps below are for a Windows installation. Installation process on other platforms is similar.

1. Requirements

1.1 Crystalfontz XE634BK-YFB-KU

This module only works with the above LCD display.



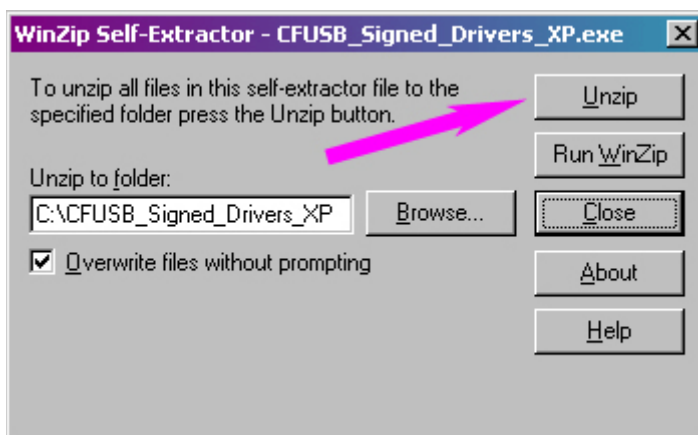
The USB LCD Display has to be directly connected to the PC and MAY NOT be connected to an USB hub unless this has additional external power supply.

2. Installing the Crystalfontz Drivers

Download the Crystalfontz drivers from following url:

<http://www.crystalfontz.com/software/usb/step1.html>

When the download is completed, follow these steps.

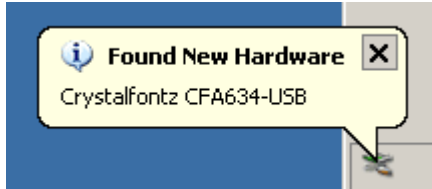


Click on the **Unzip** button

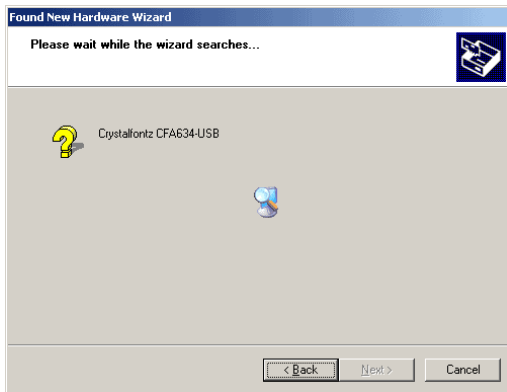
When the unzipping is complete click on the **Close** button

Now connect the Crystalfontz USB LCD Display to the PC running the ServersCheck Monitoring Software.

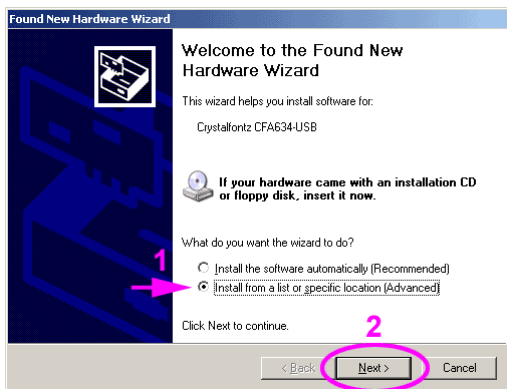
When the display is plugged into your computer's USB port, or when the computer is first powered up after connecting the display, Windows will detect the new hardware:



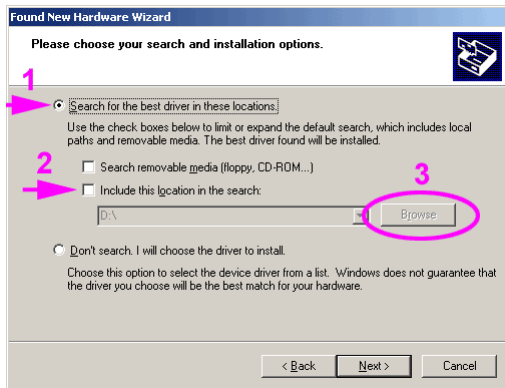
Since the display has not been connected before, Windows will start the "Found New Hardware Wizard":



The wizard will ask you to help it find the correct driver files for the new device. First select the "Install from a list or specific location (Advanced)" option, then click the "Next" button:



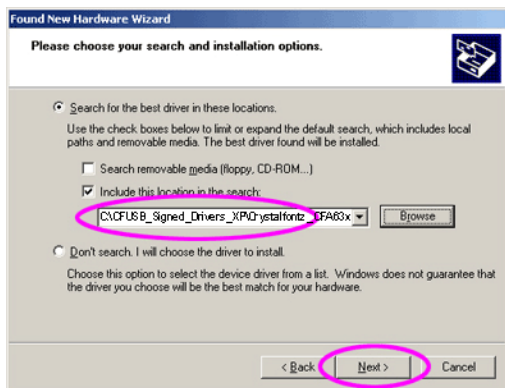
In the next step, you need to select the "Search for the best driver in these locations" option and then make sure that only the "Include this location in the search" box is checked. Then click the "Browse" button:



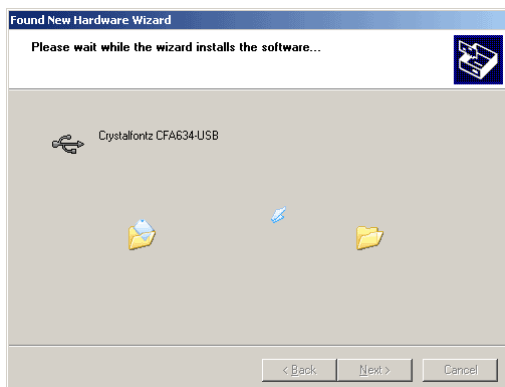
Use the the directory navigator to select the appropriate folder for your display:

C:\CFUSB_Signed_Drivers_XP\Crystalfontz_CFA63x_USB_XP

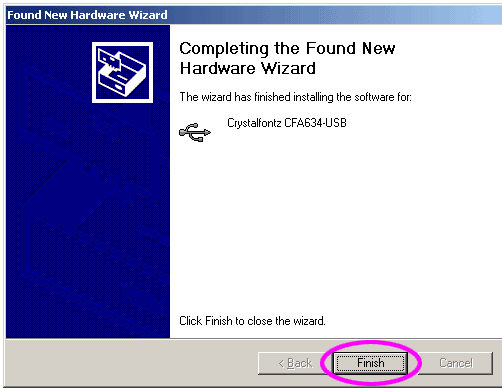
Check that your screen matches the screen shown below with your module, then click the "Next" button:



Windows will now copy the USB portion of the drivers:



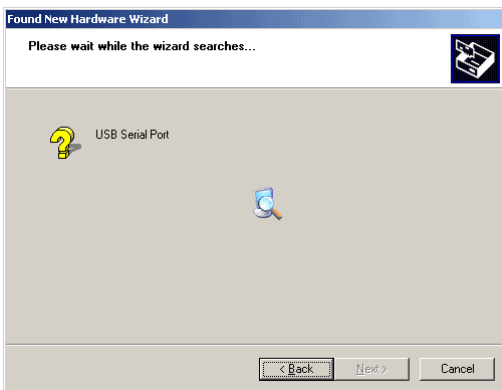
At this point, the driver installation is complete. Click "Finish" to dismiss the wizard:



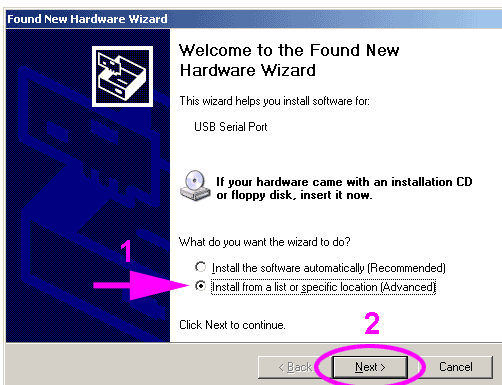
Now that the "Crystalfontz CFA63x-USB" device is installed, Windows will immediately detect the "USB Serial Port" device:



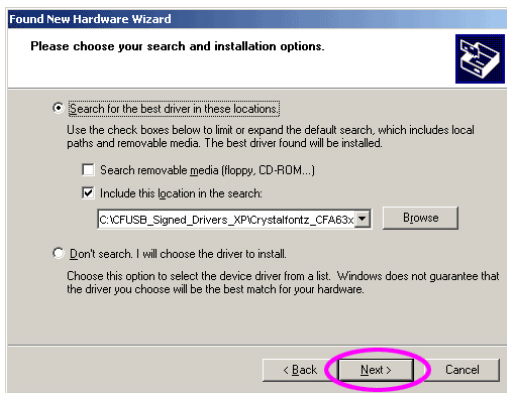
Windows will again start the "Found New Hardware Wizard" for the "USB Serial Port":



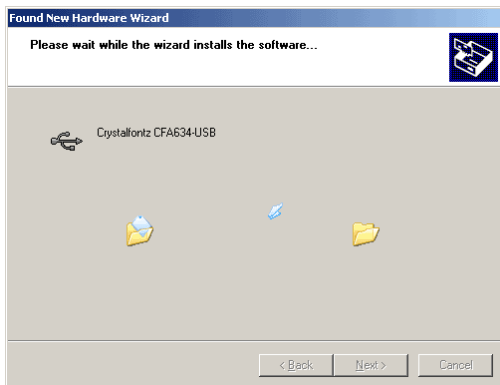
The wizard will again ask you to help it find the correct driver files for the new device. First select the "Install from a list or specific location (Advanced)" option, then click the "Next" button:



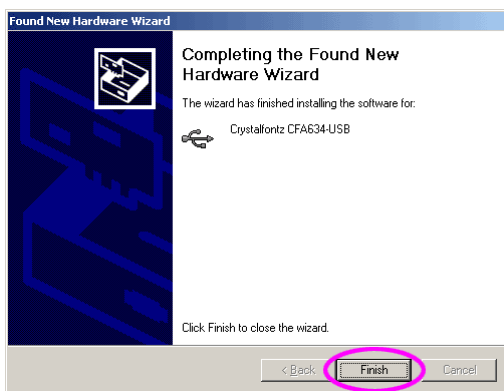
The wizard will remember the directory. Check that your screen matches the screen shown below, then click the "Next" button:



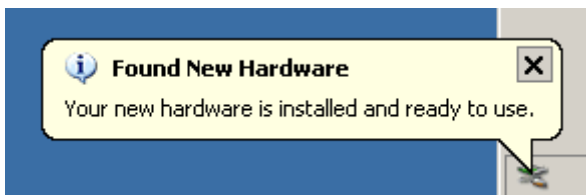
Windows will now copy the USB Serial Port portion of the drivers:



At this point, the driver installation is complete. Click "Finish" to dismiss the wizard:

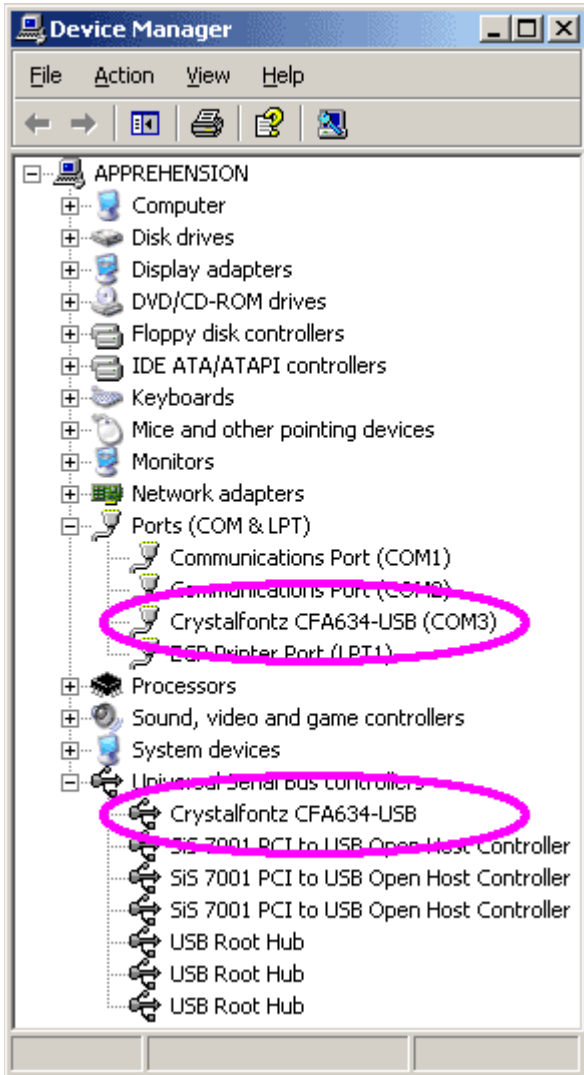


The driver installation is now complete



Now connect to the Windows **Device Manager** to get the COM port being used by the LCD Display.

Right-click the "My Computer" icon on your desktop, and select "Properties" from the drop-down menu. The "System Properties" dialog box will be displayed. Click on the "Hardware" tab near the top of the properties window. Once the properties tab is selected, click the "Device Manager" button. The device manager will open. Expand the "Ports (COM and LPT)" branch. The Crystalfontz USB display will be shown with the COM port listed at the end of this line. Please make a note of the COM port.

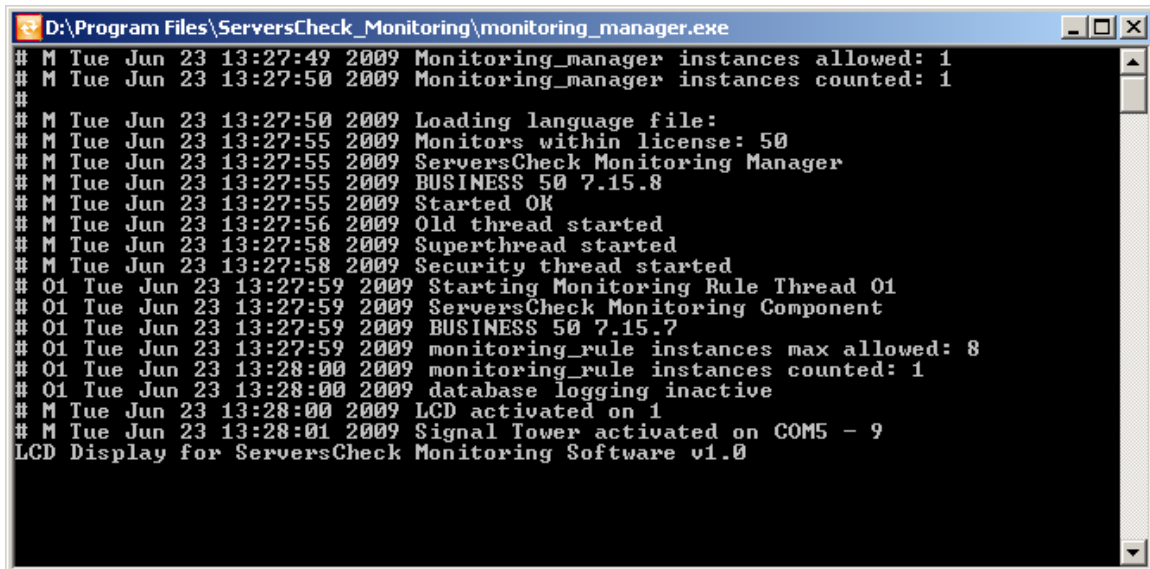


3. Configuring LCD Display for the ServersCheck Monitoring Software

Download the default configuration file from following url:
<http://files.serverscheck.net/conf/lcd.conf>

Copy the file to the `/conf` subdirectory and open it with Notepad. The default value is `6`
Replace it with the COM Port number noted in the previous section.

Now start the `monitoring_manager.exe` by double clicking on it.



```
D:\Program Files\ServersCheck_Monitoring\monitoring_manager.exe
# M Tue Jun 23 13:27:49 2009 Monitoring_manager instances allowed: 1
# M Tue Jun 23 13:27:50 2009 Monitoring_manager instances counted: 1
#
# M Tue Jun 23 13:27:50 2009 Loading language file:
# M Tue Jun 23 13:27:55 2009 Monitors within license: 50
# M Tue Jun 23 13:27:55 2009 ServersCheck Monitoring Manager
# M Tue Jun 23 13:27:55 2009 BUSINESS 50 7.15.8
# M Tue Jun 23 13:27:55 2009 Started OK
# M Tue Jun 23 13:27:56 2009 Old thread started
# M Tue Jun 23 13:27:58 2009 Superthread started
# M Tue Jun 23 13:27:58 2009 Security thread started
# 01 Tue Jun 23 13:27:59 2009 Starting Monitoring Rule Thread 01
# 01 Tue Jun 23 13:27:59 2009 ServersCheck Monitoring Component
# 01 Tue Jun 23 13:27:59 2009 BUSINESS 50 7.15.7
# 01 Tue Jun 23 13:27:59 2009 monitoring_rule instances max allowed: 8
# 01 Tue Jun 23 13:28:00 2009 monitoring_rule instances counted: 1
# 01 Tue Jun 23 13:28:00 2009 database logging inactive
# M Tue Jun 23 13:28:00 2009 LCD activated on 1
# M Tue Jun 23 13:28:01 2009 Signal Tower activated on COM5 - 9
LCD Display for ServersCheck Monitoring Software v1.0
```

You will see a line appearing:

LCD Display activated on 1

Where **1** is the COM port defined in the `lcd.conf` file

When running you should now see data appearing on your LCD display.

You can now stop the `monitoring_manager.exe` and restart the **ServersCheck Monitoring** service